



WATER AND WASTEWATER

CAPABILITY STATEMENT



POWERING FUTURES,
CREATING LEGACIES.



ABOUT US

BMD IS AUSTRALIA'S LEADING INTEGRATED ENGINEERING, CONSTRUCTION AND URBAN DEVELOPMENT BUSINESS. WE POWER FUTURES AND CREATE LEGACIES.

Over a 46-year history, the BMD Group has grown to become a \$2 billion operation, now sharing our expertise internationally in the Philippines and the UK.

The BMD Group proudly operates five companies in our unique vertical integration business model, including BMD Constructions, BMD Urban, Empower, JMac and Urbex.

Paving the way in our approach to collaboration, BMD delivers innovative and comprehensive solutions across civil construction, engineering design, residential and industrial land development, project management consultancy, landscape construction and maintenance, and building construction.

Our integrated delivery model offers our clients driven teams who deliver value for money and innovative engineering solutions through collaboration.

By drawing on the skills and capability of the BMD business to approach projects as a single unit, margin on margin costs are reduced, local resources are leveraged, and program delays are met with constructible solutions, delivering certainty for an expedited delivery and a high-quality finish.

The BMD Group continues to grow to deliver a record pipeline of work, with an employee base of more than 2,600 people.



**WE DELIVER
COLLABORATIVE
INFRASTRUCTURE
SOLUTIONS THAT
CONNECT AND
TRANSFORM
COMMUNITIES.**



WESTERN TREATMENT PLANT 5 WEST NUTRIENT REMOVAL PLANT

BMD delivered the final stage of Melbourne Water's three stage expansion at the Western Treatment Plant in Werribee, Victoria, which was recognised at the 2025 Victorian Australian Water Association Awards, taking home the Infrastructure Project Innovation Award (Metro).

This critical upgrade involved constructing a new nutrient removal plant capable of processing 150 million litres of wastewater per day – equivalent to 60 Olympic swimming pools – replacing the existing 55E activated sludge plant. As the Western Treatment Plant handles almost half of Melbourne's sewage, this upgrade is important for maintaining the city's environmental and public health standards.

OUR EXPERTISE

WATER

WE DELIVER RELIABLE AND RESILIENT INFRASTRUCTURE SOLUTIONS ACROSS THE WATER AND WASTEWATER CYCLE.



KEY

PIPELINE



WATER TREATMENT PLANT



WASTEWATER TREATMENT PLANT



SEWER PUMP STATION



SEWER MAIN



WATER MAIN



WATER STORAGE



ENVIRONMENT



OUR EXPERTISE

WATER



BMD brings deep expertise in the design, construction, and project management of water and wastewater infrastructure, from supporting local water authorities with clean water solutions to managing multi-million-dollar projects that ensure the future water security of metropolitan and regional communities.

The construction of large diameter pipelines, sewers, outfalls, water and rising mains, pump stations, water treatment plants and structures crucial to water storage form part of our capability. While our expertise in earthworks and tunnelling ensure seamless project delivery.

We incorporate critical management systems throughout design, construction, commissioning, and maintenance stages – setting industry standards to sustain local environments and support local communities.

BMD RELATED CAPABILITY Taps and bulk water



ARCADIA NATIVE FISH HATCHERY

Victorian Fisheries Authority VIC \$10.5 million

- ▶ expansion to increase production capacity for recreational fish stocking in Victoria
- ▶ construction of 100 new ponds and supporting water, drainage, mechanical, and electrical infrastructure.

BMD RELATED CAPABILITY Water main



KANGAROO ISLAND DESALINATION PROJECT

SA Water SA \$12 million

- ▶ design and construction of approximately 10,500 kilometres of reticulation main and 2.8 kilometres of DICL trunk main
- ▶ 500-kilolitre storage tank facility for the American River.

BMD RELATED CAPABILITY Water main



ONE TREE RESERVOIR

ICON Water Limited ACT \$6.4 million

- ▶ construction of new pump skid, water rising main, associated electrical works and access road
- ▶ site civil works including construction of a chlorine dosing building.

An aerial photograph of a large-scale construction project. The scene is dominated by a vast, flat concrete surface, likely a foundation or a large indoor arena. Numerous long, silver metal beams are arranged in a grid-like pattern across the site, supported by vertical posts. In the lower foreground, two construction workers wearing orange high-visibility vests and white hard hats are walking towards the camera. The background shows a clear blue sky and a distant landscape with trees and a body of water. The overall lighting is bright, suggesting a sunny day.

**WE DELIVER EXCELLENCE
IN ALL THAT WE DO.**

**POWERING FUTURES AND
CREATING ENDURING
LEGACIES THROUGH A
COMMITMENT
TO COLLABORATION.**

OUR EXPERTISE

COLLABORATIVE APPROACH

Whether self-performing works, acting as a managing contractor, or delivering in joint venture, we tailor our approach to meet client needs. All subcontractors are carefully selected for their proven on-the-job knowledge, safety performance and execution excellence.

We recognise the importance of building strong relationships with local subcontractors and suppliers, landowners, and the community to enhance project delivery and create a positive legacy.

BMD RELATED CAPABILITY Pipeline



HAUGHTON PIPELINE PROJECT STAGES 1 AND 2

Delivering Stage 2 in joint venture with DJ MacCormick

Townsville City Council QLD \$95 million (stages 1 and 2 combined)

- extension of the existing pipeline from the Haughton River to the Burdekin River
- construction of a pump station and HV power supply infrastructure.

BMD RELATED CAPABILITY Pipeline



FITZROY TO GLADSTONE PIPELINE AND TREATMENT PLANT

Delivering in joint venture with McConnell Dowell

Gladstone Area Water Board/Queensland Government QLD \$938 million

- comprising a 117-kilometre pipeline with the capacity to transport 30 gigalitres of water per year, a water treatment plant, reservoirs, and pumping stations.

BMD RELATED CAPABILITY Wastewater treatment plant



WEST CAMDEN WATER RECYCLING PLANT

Sydney Water Corporation NSW \$200 million

- critical upgrade doubling the plant's capacity to meet future population growth
- construction of new inlet works and four Membrane Bio Reactor units
- end-to-end delivery of all works from design to construction, including process, electrical, civil, and commissioning activities.



INTEGRATED DELIVERY, SUSTAINABLE OUTCOMES

BMD's appointment to two major Integrated Planning and Delivery (IPD) models reinforces our expanding presence in the water sector and our commitment to delivering reliable and resilient infrastructure solutions to support the needs of growing communities.

SA WATER'S \$3.3 BILLION CAPITAL WORKS PROGRAM

In South Australia, BMD has joined forces with Diona and Leed Engineering as one of three Pipeline Delivery Partners (PDP) under SA Water's \$3.3 billion IPD capital works program. The team will deliver a share of \$700 million in essential trunk water and sewer infrastructure upgrades, that will unlock capacity to enable new homes to be built across the state.

SOUTH EAST WATER'S \$1.5 BILLION CAPITAL WORKS PROGRAM

In Victoria, BMD has partnered with Abergeldie and KBR under the ABK joint venture to deliver South East Water's \$1.5 billion IPD capital works program over the next 10 years. Works commenced in early 2024 with the Dingley Recycled Water Scheme and Water Renewals Project – Package One, enhancing water resilience across Melbourne's south-east. Once complete, the Dingley project will ultimately deliver 1.8 gigalitres of recycled water annually to over 40 sites.

BMD RELATED CAPABILITY Water main



DINGLEY PIPELINE UPGRADE

Delivery of the first stage of the Dingley Recycled Water Scheme by ABK joint venture (Abergeldie, BMD and KBR), as part of South East Water's Integrated Planning and Delivery model

South East Water VIC \$30 million

- ▶ project will deliver Class A recycled water to sports ovals, golf courses, and market gardens
- ▶ scope includes design, procurement, construction, testing, commissioning, and handover
- ▶ use of innovative techniques, including Horizontal Directional Drilling.

OUR EXPERTISE

WASTEWATER

BMD RELATED CAPABILITY Wastewater treatment plant



RICHMOND SYSTEM WASTEWATER UPGRADE

Sydney Water NSW \$137 million

- ▶ upgrade of Richmond Water Resource Recovery Facility to service combined catchments, support regional growth and meet EPA compliance requirements
- ▶ construction of a new pump station in North Richmond and a new 7 kilometre pressure main, upgrade of three existing pump stations, and decommissioning of the North Richmond Wastewater Treatment Plant.

BMD RELATED CAPABILITY Wastewater treatment plant



WESTERN TREATMENT PLANT 5 WEST NUTRIENT REMOVAL PLANT

Melbourne Water VIC \$330 million

- ▶ construction of five bioreactor-clarifier tanks
- ▶ delivery of waste activated sludge and effluent discharge pipeline connections along with ancillary buildings, pump stations and commissioning services
- ▶ project addressed historical and future growth, renewed aging equipment and improved overall plant efficiency.

BMD RELATED CAPABILITY Sewer pump station

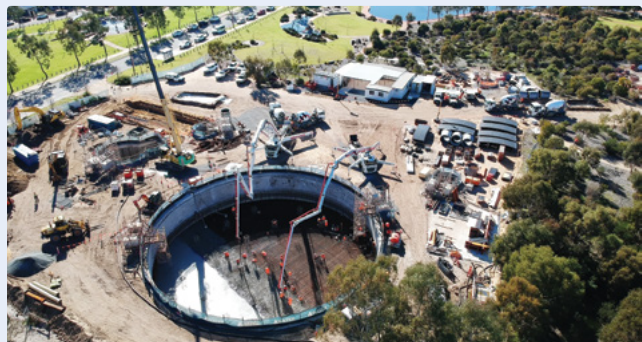


KINGSBOROUGH SEWERAGE TREATMENT PLANT UPGRADE

TasWater TAS \$50 million

- ▶ upgrade of Blackmans Bay Sewerage Treatment Plant capacity from 4.1 to 8.5 million litres per day, including conversion of three lagoon-style plants into network pump stations
- ▶ design, construction, and commissioning of a new pipeline to transfer sewage.

BMD RELATED CAPABILITY Sewer pump station



BALDIVIS SEWER PUMP STATION

Water Corporation WA \$28 million

- ▶ upgrade to support community growth and future land development in south Perth
- ▶ includes manufacture, supply, construction, installation, testing, and commissioning.

BMD RELATED CAPABILITY Sewer pump station



UPPER WAWA DAM PUMPING STATION

Wawa JVCo Inc. Manila (Philippines) PhP 3.2 billion

- ▶ designed and constructed a pumping station at the Upper Wawa Dam as part of Metropolitan Waterworks and Sewerage System's plan to improve the water supply delivery to Metro Manila.

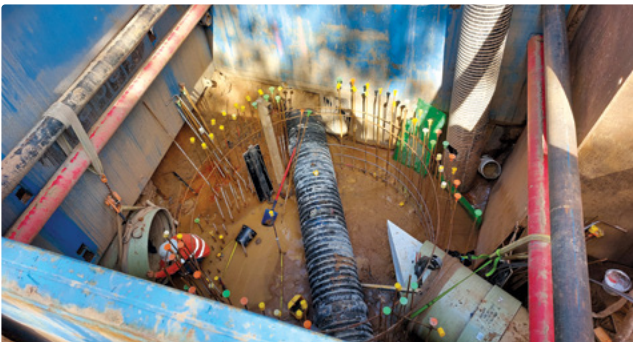




THE POWER OF BMD

BMD's vast experience across industry sectors further bolsters our ability to deliver complex infrastructure projects that help shape the future of water and wastewater. In a sector that is both complex and multifaceted, BMD remains focused on working collaboratively with clients, governments and our local communities to achieve a sustainable future.

BMD RELATED CAPABILITY Sewer main



O'POSSUM CREEK TRUNK SEWER STAGES 1 AND 2

Springfield City Group QLD \$16.2 million (combined stages 1 and 2)

- ▶ vital sewer infrastructure including 623 metres of micro-tunnelling and live bypass works for flow switching and cut-ins to existing mains.

BMD RELATED CAPABILITY Sewer pump station



PIRLANGIMPI PUMP STATION AND RISING MAIN

Department of Infrastructure, Planning and Logistics NT \$1.75 million

- ▶ sewer pump station upgrade in the remote Indigenous community of Pirlangimpi on the Tiwi Islands to support future growth and a new residential subdivision.

BMD RELATED CAPABILITY Sewer main



SUNBURY TRUNK SEWER

Greater Western Water VIC \$3.2 million

- duplication of the original outfall built in the 1970s, including connection of nearly 1000 metres of pipeline and construction of new maintenance holes.

BMD RELATED CAPABILITY Sewer pump station



RIVERLEA PUMP STATION

Walker Corporation SA \$6.5 million

- construction of a vacuum wastewater pump station to service 1,830 residential and retail lots
- basement built below groundwater level, requiring continuous dewatering and robust waterproofing.

BMD RELATED CAPABILITY Water treatment plant



MOUNT CROSBY EAST BANK WATER TREATMENT PLANT FILTER UPGRADE

Seqwater QLD \$35 million

- upgrade of filtration infrastructure and control systems to support demand and compliance for the next 25 years
- refurbishment of 20 filter cells, including installation of new underdrain systems and filter media.

BMD RELATED CAPABILITY Water treatment plant



DOUGLAS WATER TREATMENT PLANT UPGRADE

Townsville City Council QLD \$28.4 million

- commissioning of two new clarifiers to improve Townsville resilience and water security
- new infrastructure provides the ability to treat 950 litres of raw water per second through the module 3 clarifier and 1100 litres per second through the module 4 clarifier.



PRIORITISING LOCAL PROCUREMENT AND REGIONAL DELIVERY

STRENGTHENING THE AUSTRALIAN SUPPLY CHAIN AND RURAL ECONOMIES THROUGH LOCAL ENGAGEMENT

BMD's experience spans remote and regional areas. From building bridges in the remote Kimberley region to laying pipeline through regional North Queensland our teams have a clear track record of skilfully managed project execution and delivery.

BMD understands the unique challenges involved including attracting and retaining skilled workers, managing procurement and complex logistics, delivering plant and materials, coordinating accommodation camps and workforce rostering and dealing with inclement weather.

Guided by our relationship-based approach, we are committed to supporting regional and rural economies by sourcing services and materials locally, upskilling local workers, and leaving a lasting legacy of skills, training and employment.

NEW FITZROY RIVER BRIDGE

Main Roads Western Australia WA \$245 million
Delivered in joint venture

OVER 260 local Aboriginal workers employed

25% OF TOTAL HOURS completed by Aboriginal workers (111,661 hours)

22% OF PROJECT VALUE spent with Aboriginal enterprises (\$36 million)

21 CONTRACTS AWARDED to local Aboriginal-owned businesses

PARTNERSHIPS WITH
FIVE FITZROY VALLEY
language groups



HEALTH AND SAFETY

HOLD HIGHEST LEVELS

of industry accreditations and certifications including Federal Safety Commissioner Accreditation

Investment in

THREE YEAR

safety strategy in place

0.5 LTIFR12

(Lost time injury frequency rate)

STRONG

health and safety culture with high levels of workforce engagement

Simplifying safety, strengthening controls through critical risk planning

Targeted workshop on high-risk crane lifts held as part of critical risk planning for the Molonglo River Bridge project, ensuring safe and coordinated execution of complex lifting operations.



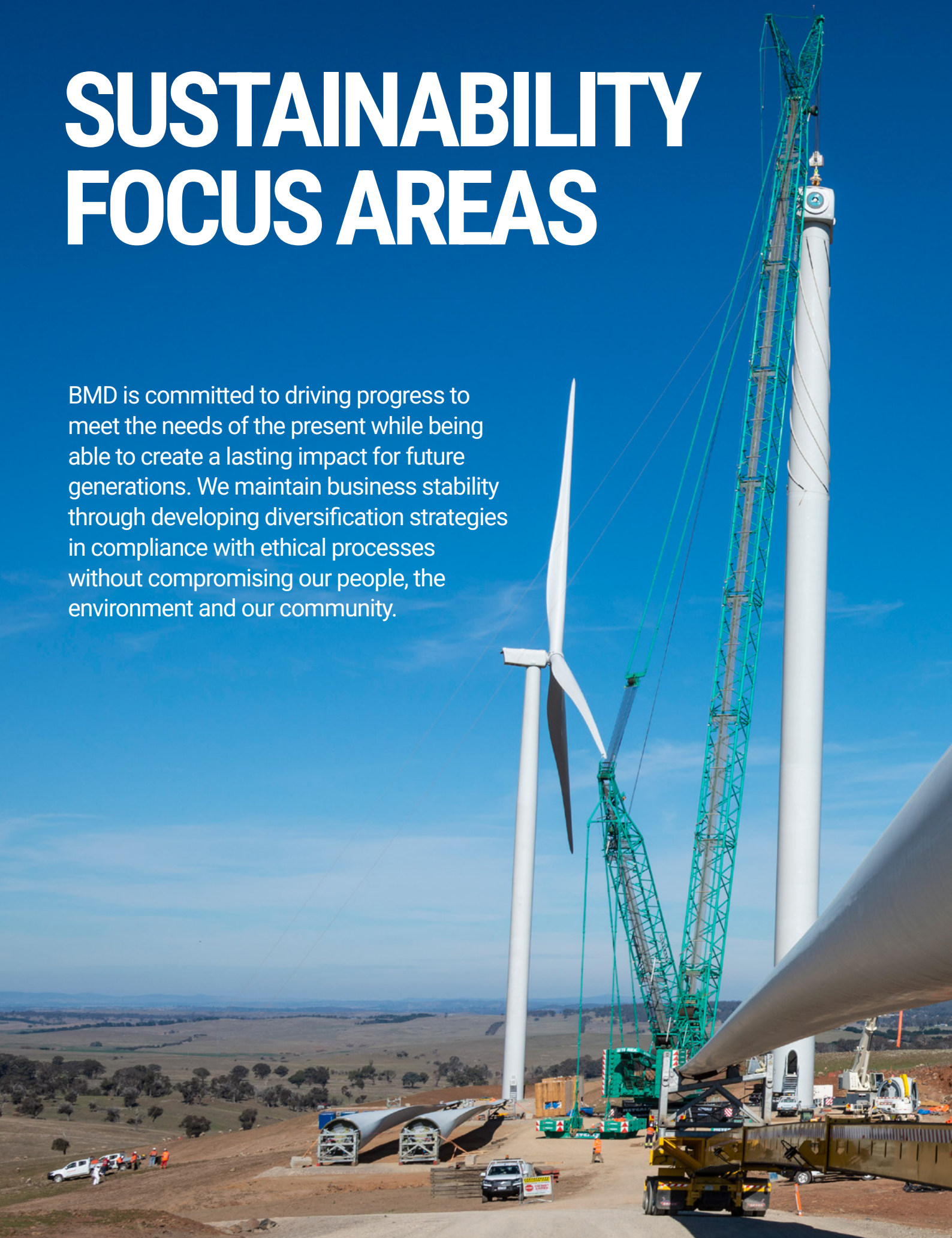


VISION STATEMENT:

"We will achieve safety excellence through strong and visible leadership, enhancing the capability of our people to foster an environment where the physical and psychological health and wellbeing of our people is fundamental to our overall success."

SUSTAINABILITY FOCUS AREAS

BMD is committed to driving progress to meet the needs of the present while being able to create a lasting impact for future generations. We maintain business stability through developing diversification strategies in compliance with ethical processes without compromising our people, the environment and our community.





ENVIRONMENT

We support innovations and technologies that reduce our carbon emissions, improve waste and circular economy processes and protect biodiversity while mitigating ecological impacts.



SOCIAL

We prioritise our workforce by investing in wellbeing programs, improving health and safety practices and ensuring diversity and inclusion within our business. We are committed to creating career pathways and economic opportunities for our people that transcends our clients, the community and Indigenous partnerships.



GOVERNANCE

We ensure data security in our processes and systems to maintain ethical and compliant business and supply chain.



ECONOMIC

We prioritise commercial principles to ensure positive economic outcomes for our business operations, partners and communities.



SOCIAL IMPACT

We continue to invest in the wellbeing of our people, while building a more diverse, inclusive and balanced workforce. We're continually improving safety for our people and the communities around us.

Our commitment extends beyond our projects, with more than \$1.5 million invested each year in community sponsorships and partnerships. Through this support, we help power local teams, clubs and events that reflect our values and promote the growth and profile of our industry.



\$224M

Indigenous procurement spend from 2017-2025

\$1.1M

spent with Social Traders Australia certified suppliers in FY25

3.16%

Indigenous employment in FY25

\$760K

spent with Veterans in Construction in FY25

\$1.5M+

annual investment in community partnerships

CREATING ENDURING LEGACIES IN THE COMMUNITIES IN WHICH WE OPERATE

BMD acknowledges with deep respect the traditions, values and cultures of Aboriginal and Torres Strait Islander peoples across Australia. Our commitment to fostering relationships and collaboration with Aboriginal and Torres Strait Islander peoples and businesses remains integral to how we operate and ensures our projects create positive and lasting impacts in communities, beyond the infrastructure we deliver.

Through our Stretch Reconciliation Action Plan (RAP), we outline our commitments, strategies, actions and key initiatives aimed at achieving our vision of a sustainable future for Aboriginal and Torres Strait Islander peoples. This includes fostering cultural understanding within our organisation, providing employment and training opportunities for Aboriginal and Torres Strait Islander peoples, supporting Aboriginal and Torres Strait Islander owned businesses through procurement and creating meaningful partnerships with communities.

**SCAN TO READ
OUR RAP**





www.bmdgroup.global